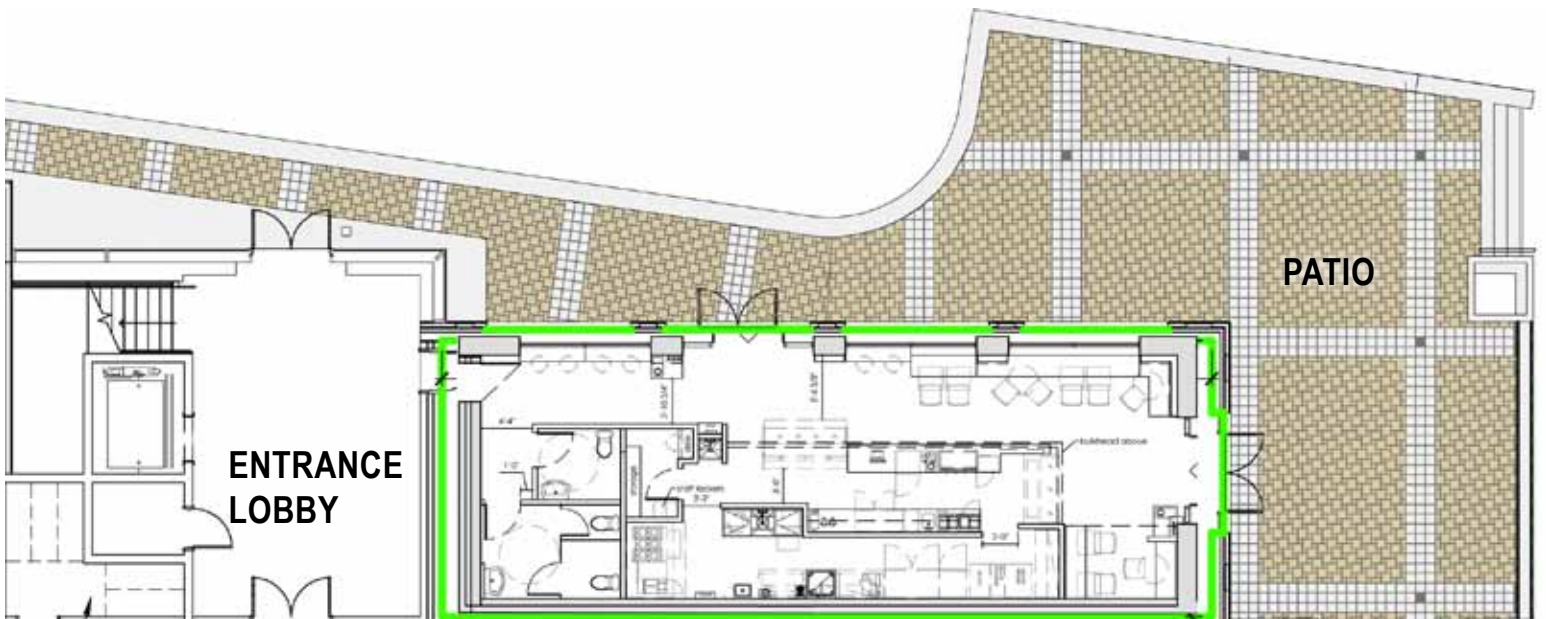


Ground Floor Retail Unit | #106-3200 Richter Street, Kelowna, BC



CALLAHAN PROPERTY GROUP



callahanpg.ca

250.717.3000

leasing@callahanpg.ca

The information contained herein was obtained from sources which we deem reliable, and while thought to be correct, is not guaranteed by Callahan Property Group.

CALLAHAN PROPERTY GROUP



Located in KPMG Office Building beside Save-On-Foods, Urban Fare, and Mission Park Shopping Centre, Kelowna's premier in-line shopping destination.

Walk Score

84

Very Walkable

Most errands can be accomplished on foot.

Bike Score

72

Very Bikeable

Area Demographics Within 10 Minute Drive:



Average household income: \$78,251



Daytime working population: 55,325



Total community population: 61,205

callahanpg.ca

250.717.3000

leasing@callahanpg.ca

CALLAHAN PROPERTY GROUP

- +/- 1,352 sf ground floor retail unit located in Kelowna's busy South Pandosy Shopping District
- +/- 60 feet of frontage facing Richter Street and +/- 20 feet of frontage facing busy Save-On-Foods parking lot
- Patio opportunity
- Plenty of parking
- On major transit routes
- Walking distance to Gyro Beach, multiple schools and Okanagan College



K.L.O. Road

Richter Street

ENTRANCE



+/- 1,352 sf available!



Lakeshore Road

callahanpg.ca

250.717.3000

leasing@callahanpg.ca