

5583 AIRPORT WAY, KELOWNA



WAREHOUSE SPACE WITH GRADE LEVEL LOADING AT KELOWNA AIRPORT

INDUSTRIAL

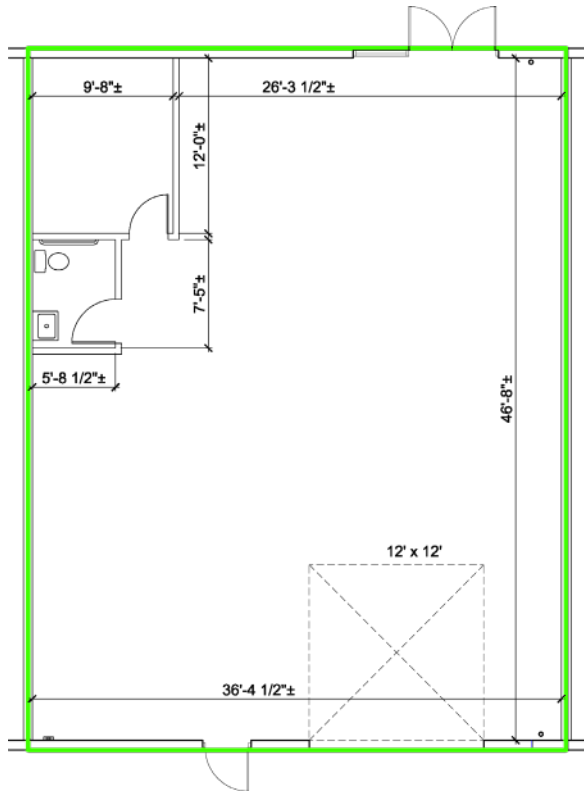
± 1,776 sf warehouse available at 5583 Airport Way at Kelowna International Airport. This unit offers great proximity to the terminal, on-site parking, and a glazed entrance. The available space has ± 14' ceilings, a grade level bay door, and is in an ideal location for airport-related business.



HIGHLIGHTS

- ± 1,776 sf unit at Kelowna International Airport
- Great proximity to terminal
- Free on-site parking
- ± 14 ft ceiling height
- Unit suited with glazed entry and a small office
- Grade level bay door (12' x 12')

FLOOR PLAN



AREA HIGHLIGHTS

5583 AIRPORT WAY, KELOWNA

Well-situated warehouse at Kelowna International Airport in close proximity to terminals and two minutes from Highway 97. Ideal opportunity for businesses with airport related logistics and freight operations.

