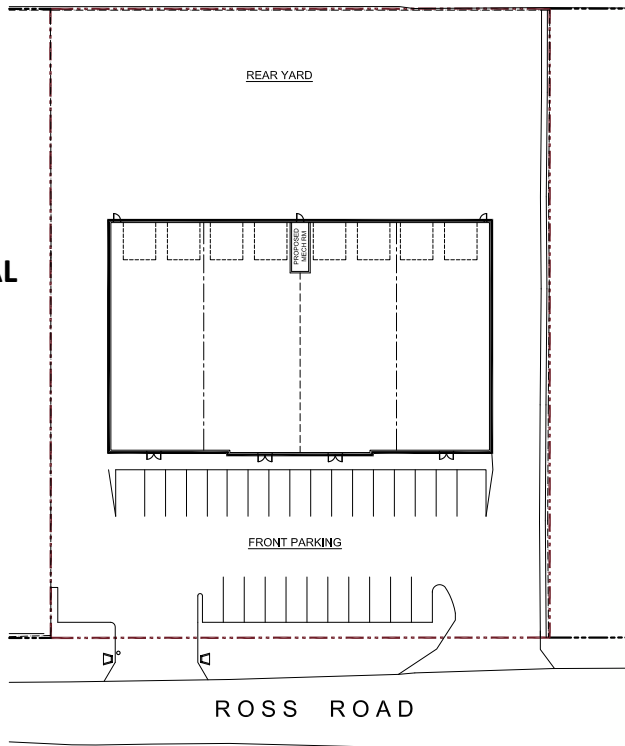


**2525 Ross Road (at Highway 97), West Kelowna, BC**



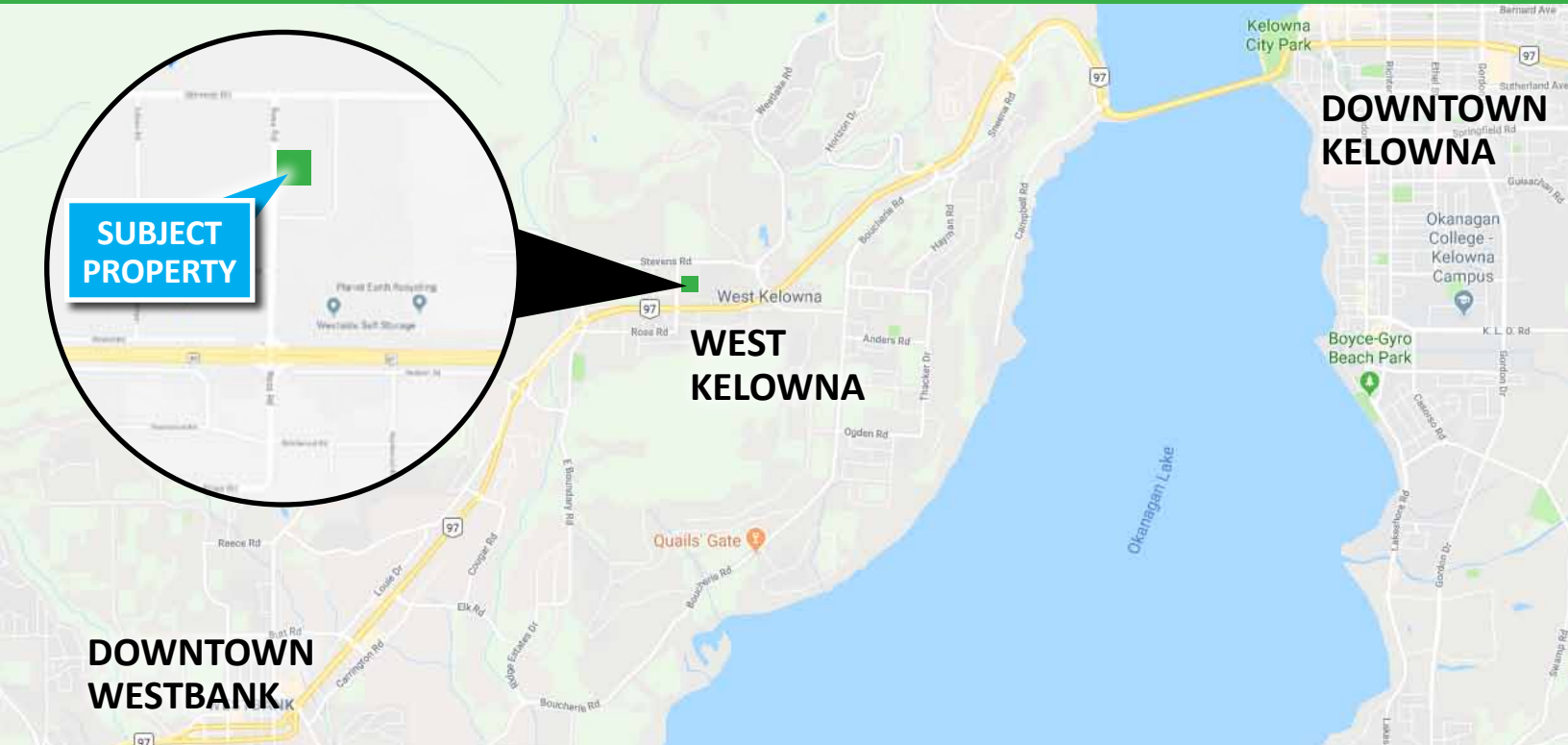
**CONCEPTUAL  
SITE PLAN:**



- Options of +/- 4,000 sf to +/- 16,400 sf available
- Easy access to and from Highway 97
- Potential yard area
- +/- 24 foot ceilings
- Grade loading
- 1/2 block from traffic-controlled Highway 97 intersection
- 5 minutes from Downtown Kelowna
- Situated within one of the fastest growing communities in the Okanagan Valley
- Modern efficient building coming soon!



# CALLAHAN PROPERTY GROUP



[callahanpg.ca](http://callahanpg.ca)

250.717.3000

[leasing@callahanpg.ca](mailto:leasing@callahanpg.ca)

The information contained herein was obtained from sources which we deem reliable, and while thought to be correct, is not guaranteed by Callahan Property Group.