



Dilworth Business Park | 1640 Dilworth Drive, Kelowna BC



- 7,700 sf street-facing unit available now (facing Dilworth)
- Significant signage potential facing Dilworth Drive
- Plenty of parking
- +/- 18' high ceilings
- 1 bay door with grade loading
- Easy loading
- Power: 200 amps / 3 phase

callahanpg.ca

250.717.3000

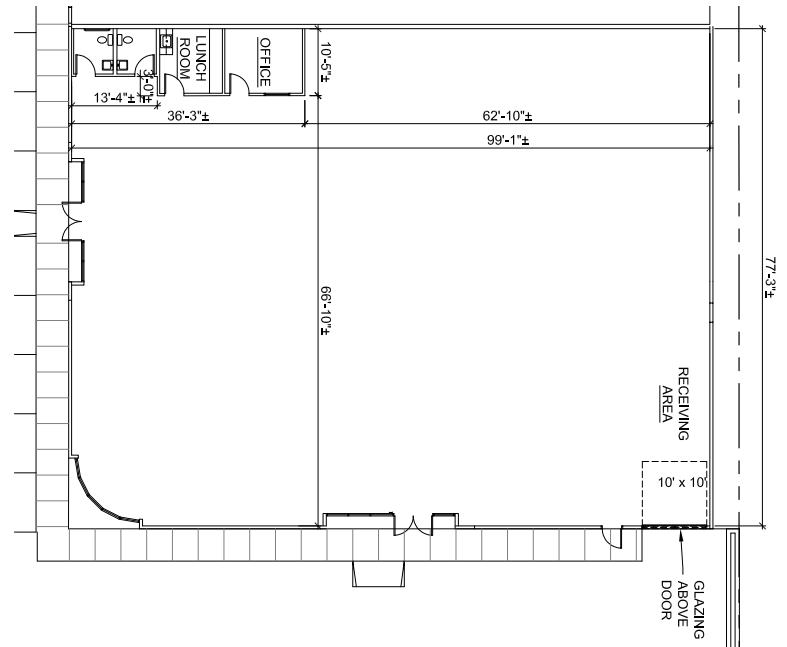
leasing@callahanpg.ca

CALLAHAN PROPERTY GROUP



Dilworth Business Park | 1640 Dilworth Drive, Kelowna BC

- Centrally located
- 1.5 blocks North of Highway 97
- Easy access and loading
- Close to amenities
- Move-in ready



Dilworth Drive

callahanpg.ca

250.717.3000

leasing@callahanpg.ca