

#100 - 395 Penno Road, Kelowna BC

Available Now



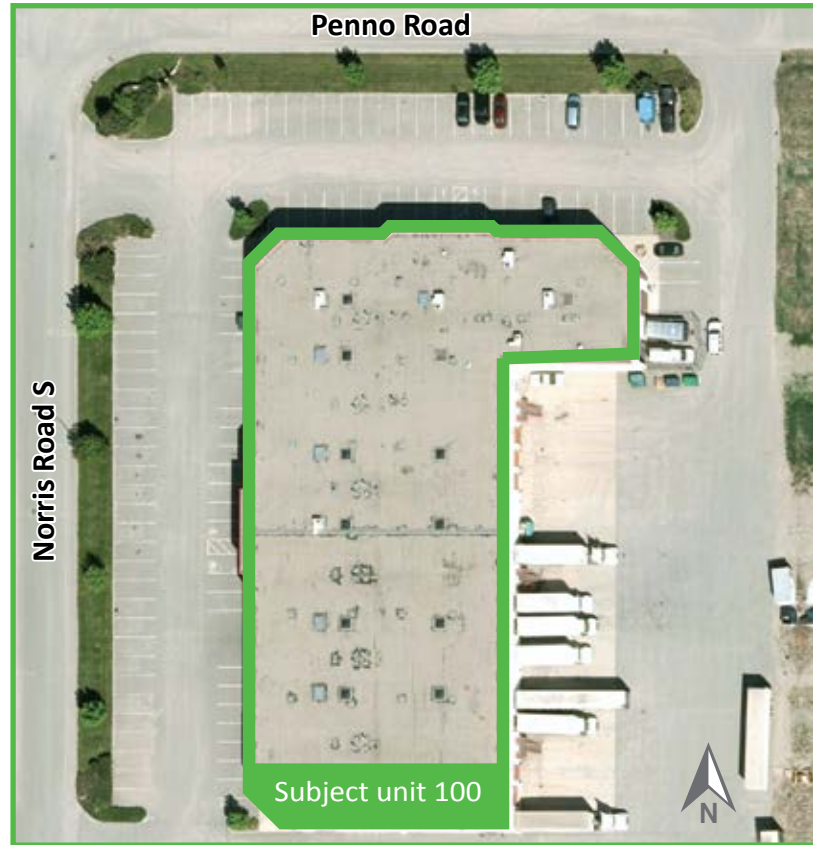
## Details

- ± 4,482 sf available now
- Corner unit
- 8' x 9' loading dock with leveler
- 10' x 10' loading dock
- Generous trailer turning radius



# CALLAHAN PROPERTY GROUP

#100 - 395 Penno Road, Kelowna BC



## Details

- Easy access to property
- 2 blocks east of Highway 97
- 1 block south of card locks and truck wash
- Plenty of parking
- Move-in ready
- Approx. 24' ceilings
- Large warehouse area with skylights providing plenty of natural light
- 2 offices, lunch room, open area, and mezzanine

callahanpg.ca

250.717.3000

leasing@callahanpg.ca